

Notes:
 1. Handrail and stair parts are from Home Depot
 2. Discuss assembly methods

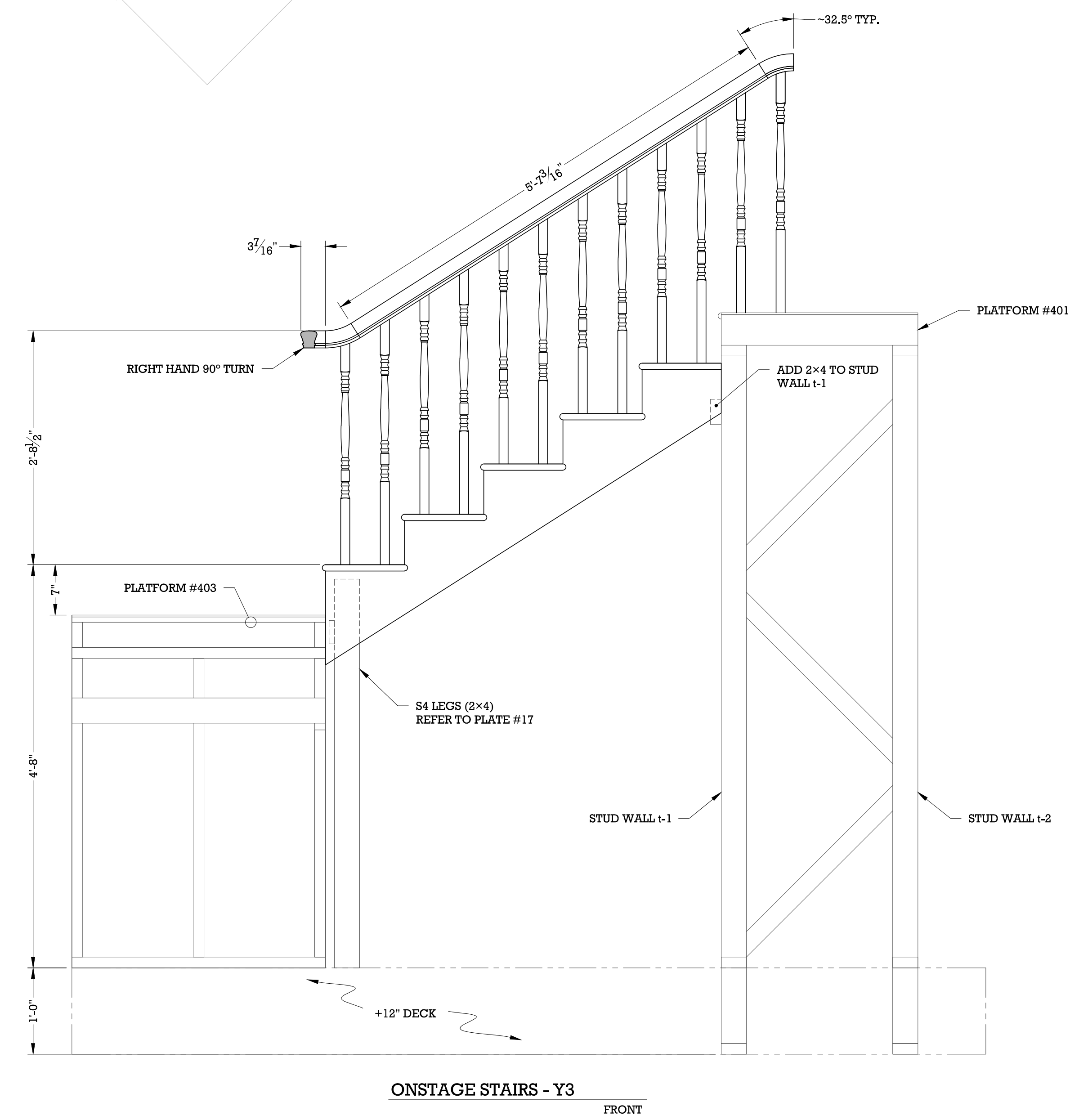
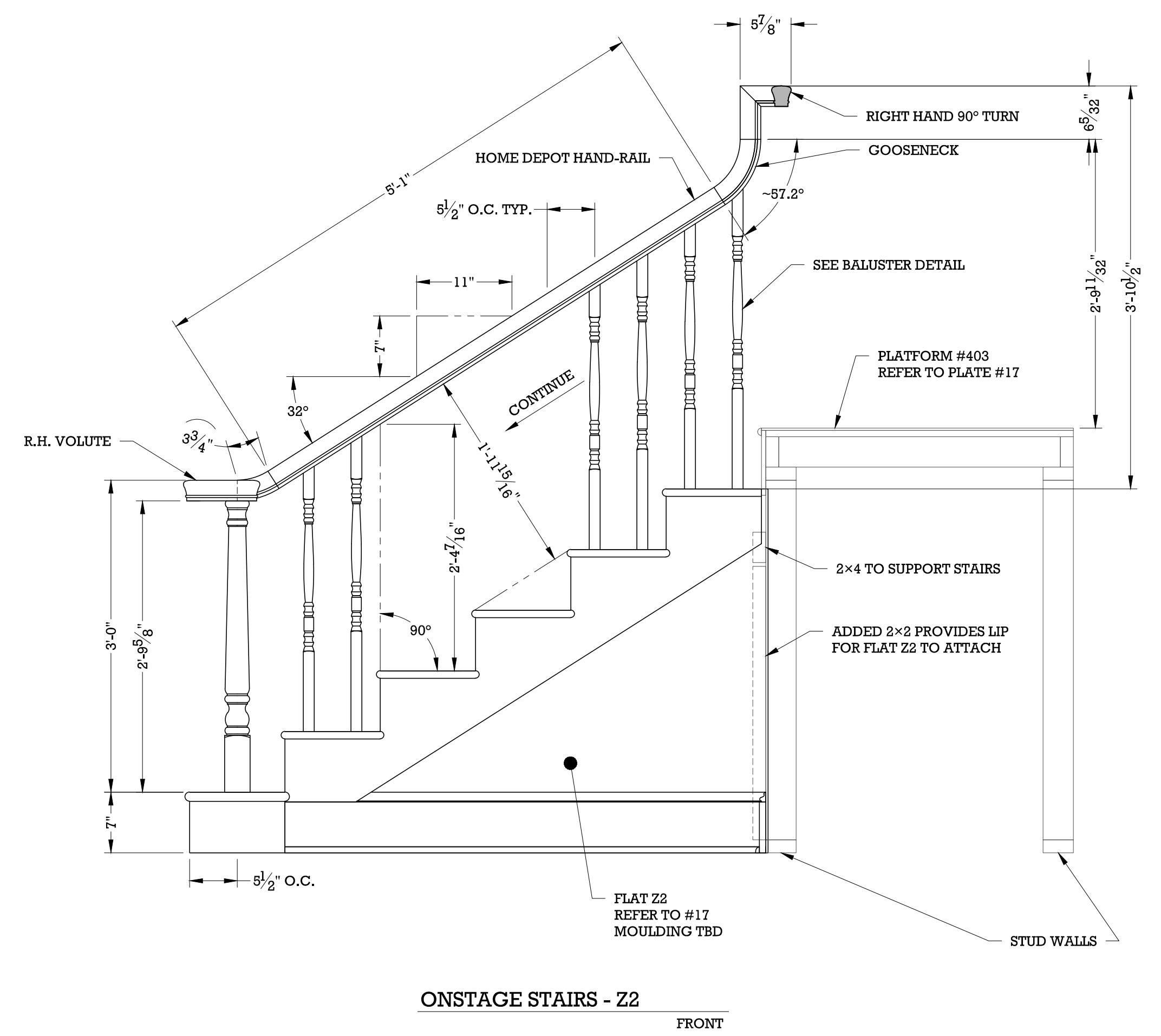


Plate:
12
 of: 90

Date: 09 March 2010
 Revised:

Scale: 1" = 1'-0"

Directed By: Gordon Edelstein
 Designed By: Michael Yeargan

Drafted by: Matthew D. Jordan
 File Name: Doll <date>.dwg

LONG WHARF THEATRE
 A Doll's House
 Onstage Stairs